

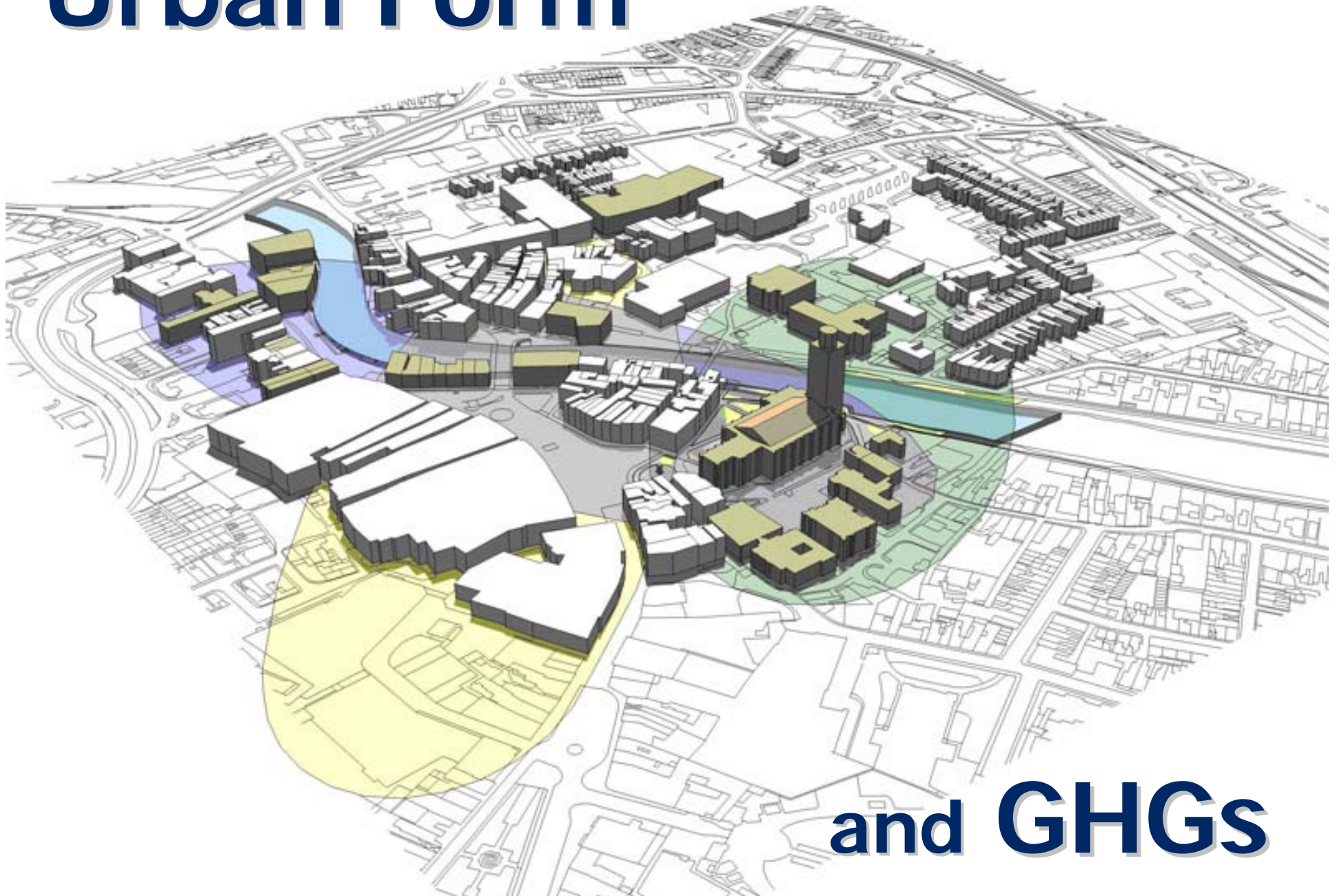


District Energy and Urban Form

Union of BC Municipalities Convention

September 24, 2008

Urban Form



and GHGs



Less of this...



... and more of this.

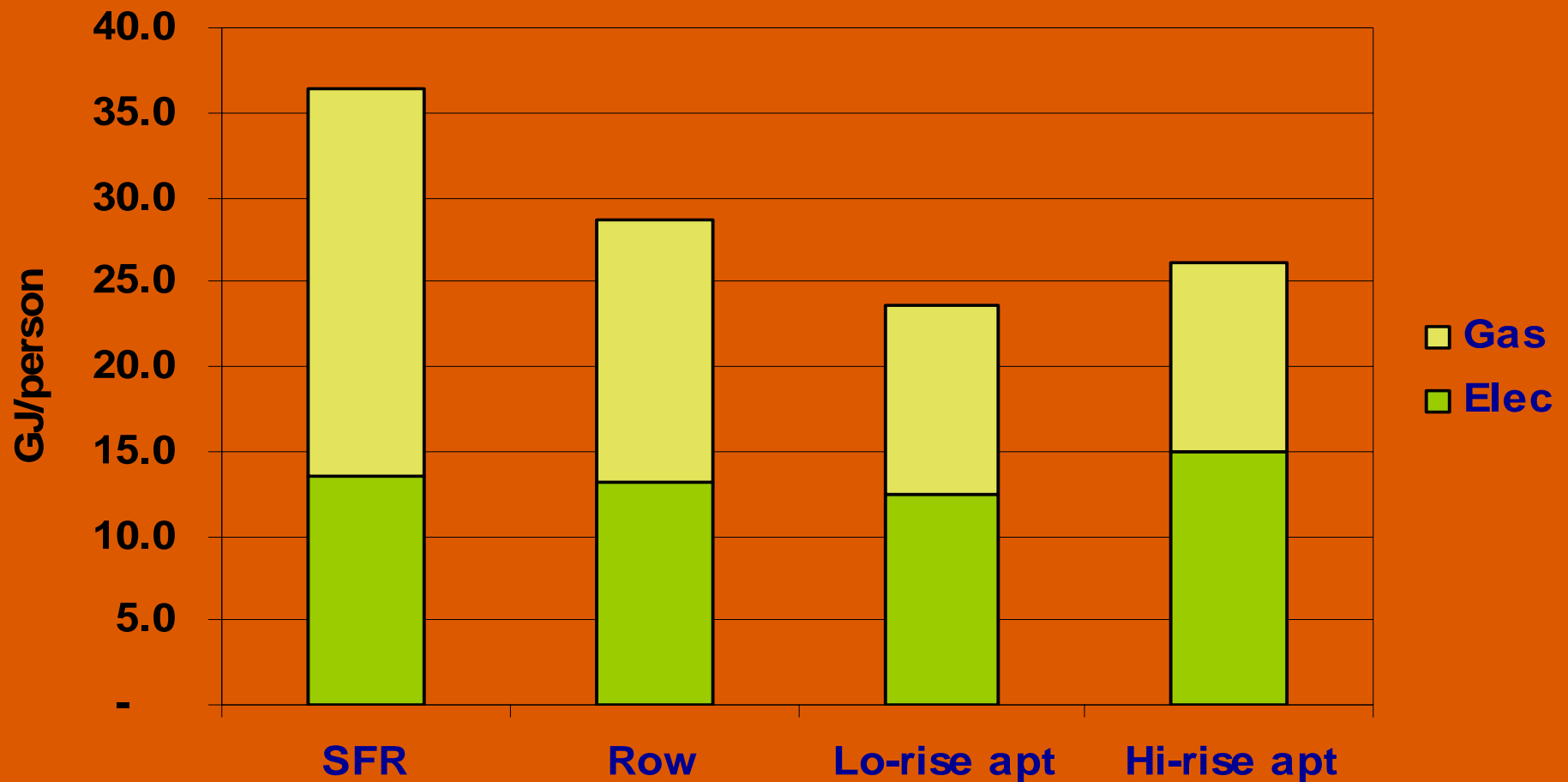


Buildings

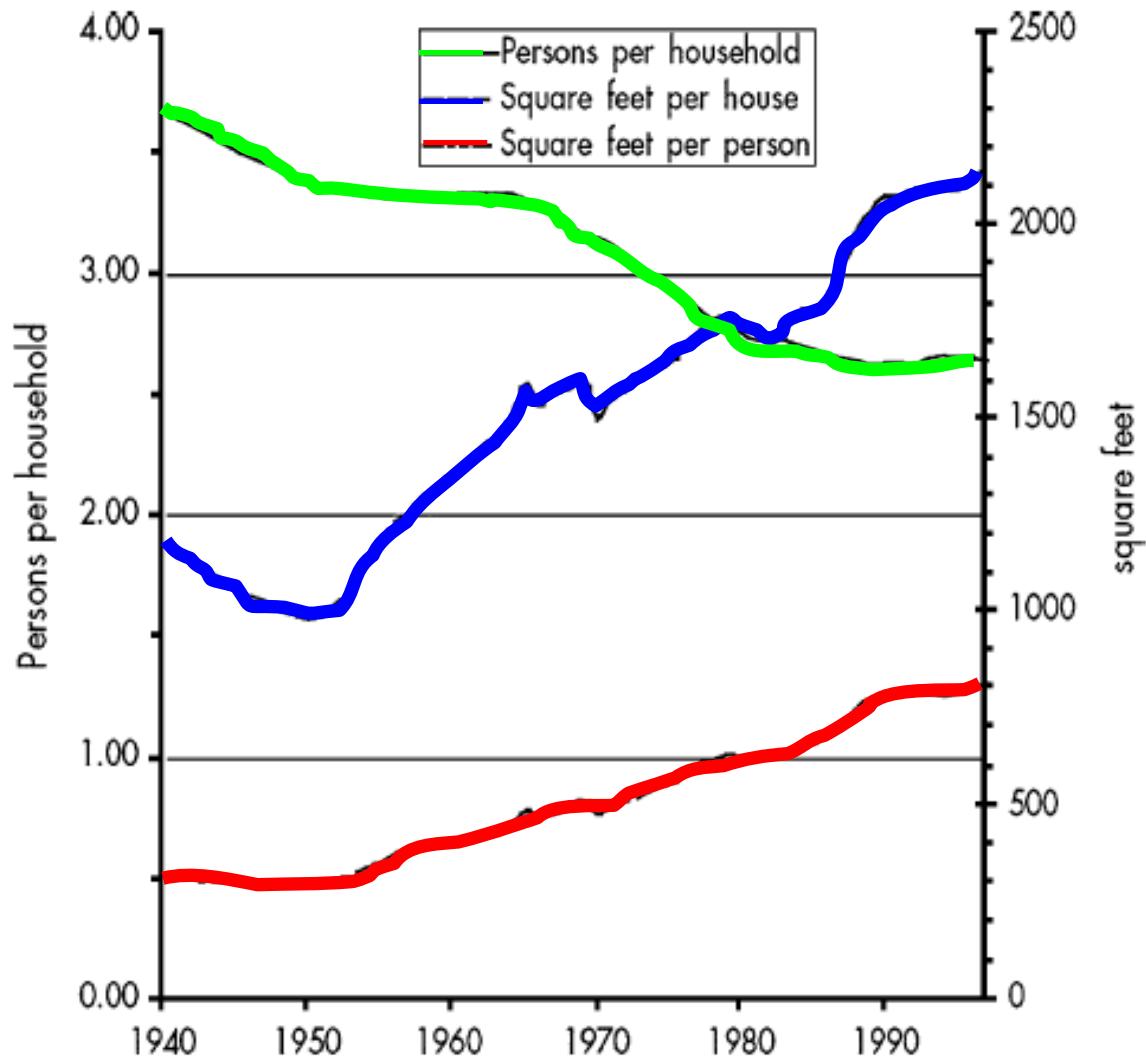


Energy Use By Building Type

(MEMPR Residential Baseline Report, 2003)



Growth in US House Size (1940 – 2000)



Infrastructure – Water/Wastewater



Sprawl >> Lawns >> Water consumption
Distance + Volume = Pump power



Location of wastewater treatment is critical to use as a renewable heat source.

Infrastructure – Solid Waste



- Location impacts trucking
- Cost-effectiveness of recycling
- Waste-to-energy potential

District Energy: The Future of Energy Distribution



Growing Interest Around BC

- Vancouver
- Revelstoke
- North Vancouver
- Richmond
- Coquitlam
- Houston
- Prince George
- Victoria
- Whistler
- Squamish
- Gibsons
- Vancouver



Integrating District Energy with Community Planning



Density

Proximity

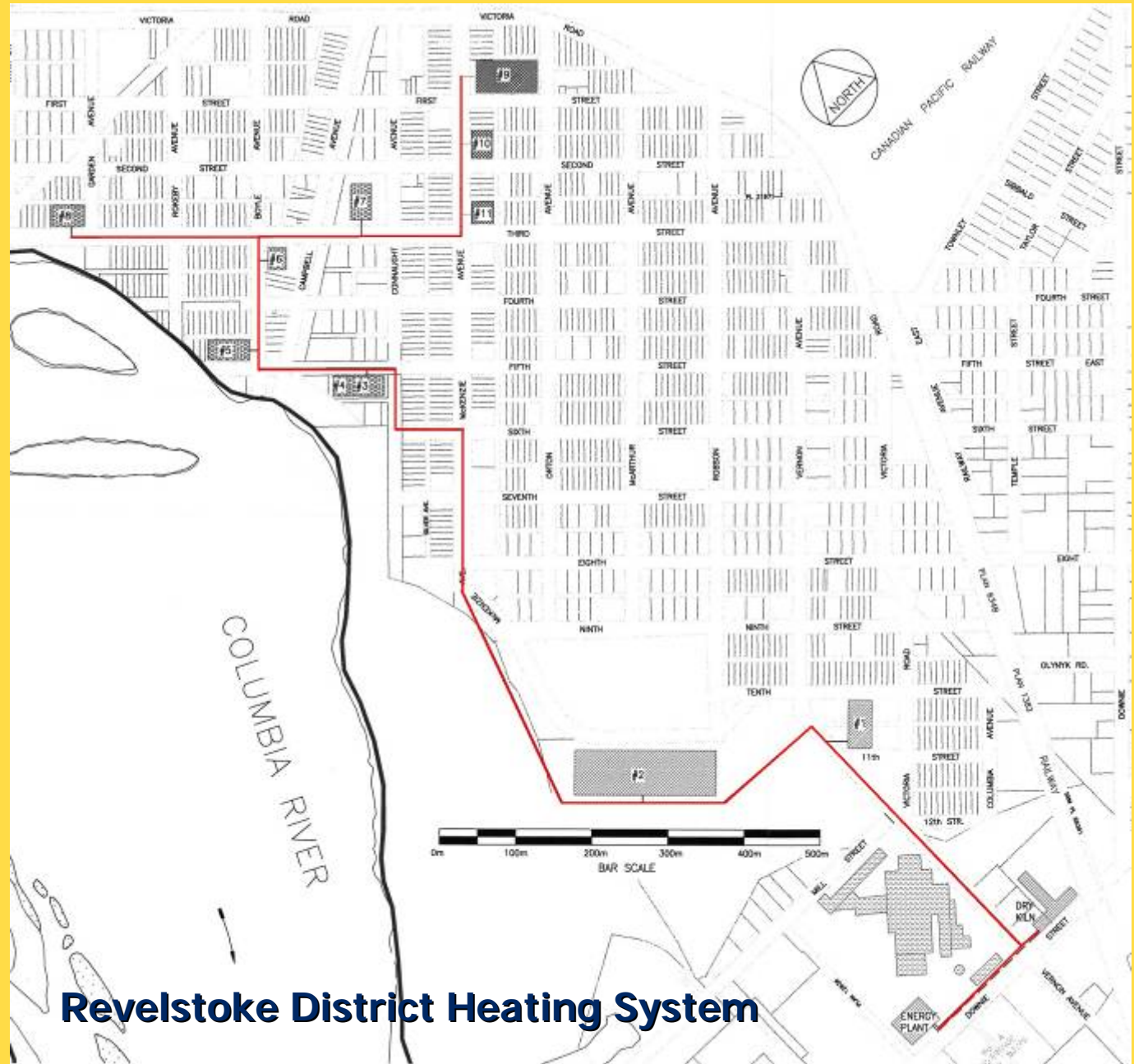
Diversity

Load balance

Infrastructure
integration

Bylaws & policies

Density & Proximity



Revelstoke District Heating System



Diversity & Balance

Bylaws & Policies

- Official Community Plan
- Zoning regulations
- Development Permit Areas
- Service area bylaws



District Energy Ownership Options

	Liability Exposure	Expertise and capacity	Degree of LG control
Operation as LG department	High	Low for smaller LGs	High
Wholly-owned subsidiary	Lower	Low for smaller LGs	High
Service contract for operation	Lower	High	Moderate
Joint ownership	Lower	High	Lower



Contact info: Community Energy Association
604-628-7076
info@communityenergy.bc.ca
www.communityenergy.bc.ca

Supporters



Members

